

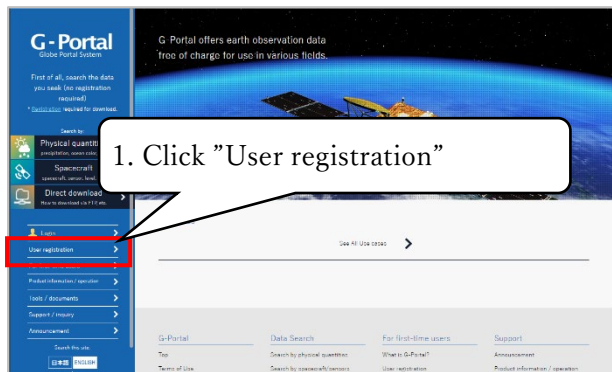
1. The user categories in G-Portal

The user categories in G-Portal are shown in the table below. User registration is required to download products. (See "2. How to register as a G-Portal user").

User Type	Definition	Services Available
Guest User	Users who have not completed user registration	Search and browse data online. Note that guest users are unable to order or acquire products.
Registered User	Users who have completed user registration	Search, browse, product, process and acquire standard products online. Acquire standard products and some near real-time products directly from the SFTP server.
Specific User	Register users, collaborator specially permitted by JAXA	Search, browse, product, process and acquire standard products online. In addition to the products that registered users can download, acquire special products being available to those who are JAXA-approved directly from the SFTP server.

2. How to register as a G-Portal user

To download products from the G-Portal Web or SFTP site, you should register as a user. The steps for registering as a user are explained below.



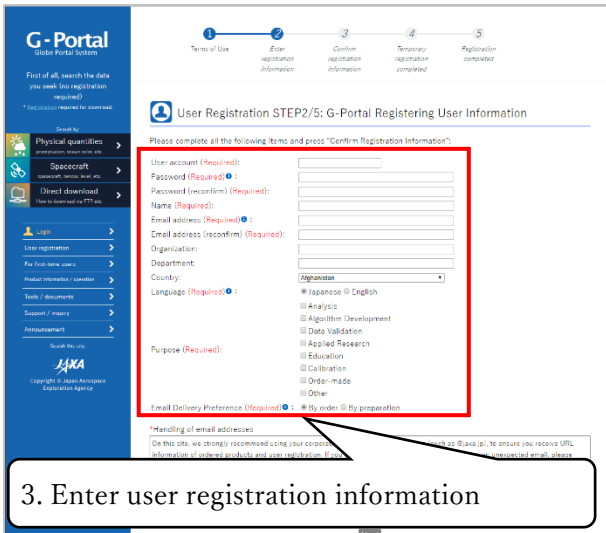
(1) Click "User registration" from the left menu.



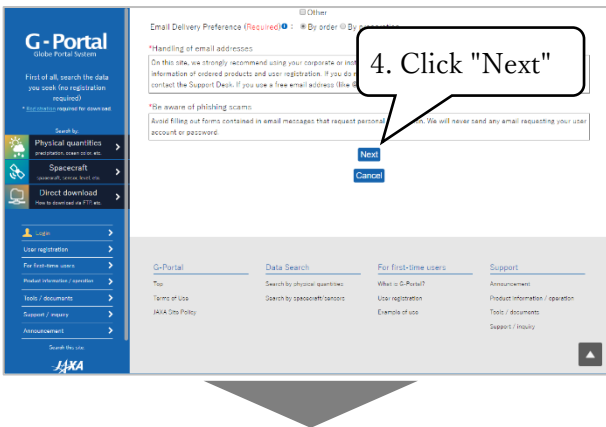
(2) To register a user, you must agree to the terms of service. Please read through the terms and click the "I Agree - Continue" button, then you will be moved to page "User Registration window".

If you do not agree to the Terms of service, you will not be able to register as a "registered user". In that case, you will only be able to use the Service as a "guest user".

*If you check "I agree to the above terms of service", you will be able to click the "I Agree - Continue" button.



- (3) Enter all user information to be registered (user account, password, name, email address, organization, department, country, language, purpose of use, email delivery preference).



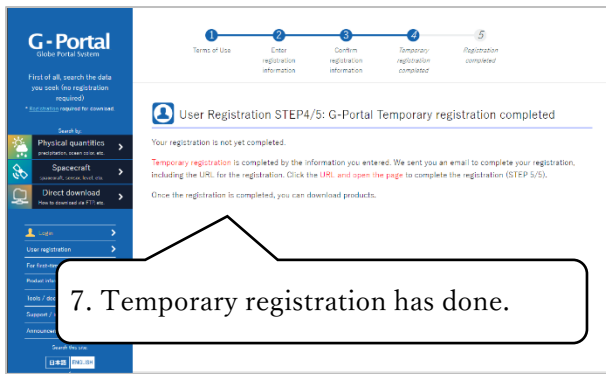
- (4) Click the "Next" button to move to the window to check the information you've entered. If you want to cancel the input contents, please click "Cancel" button.

*The "Register Confirmation Screen" button can be clicked by entering all the items labeled (Required).

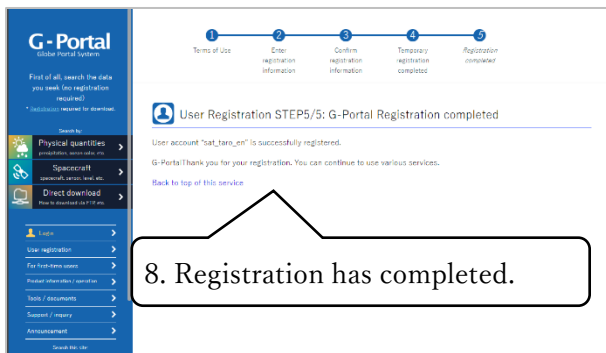


- (5) The entered user information will be displayed, so check if there is any mistake in the contents. To correct, please click the "Back" button. You will return to the screen for entering user information.

- (6) Click the "Register" button to perform the provisional registration procedure.



- (7) The temporary registration procedure is completed. "Temporary registration notification mail" will be sent to the email address you entered. Registration is completed by accessing the URL described in the mail. At the time of temporary registration, you can not log in because user registration has not been completed yet.



- (8) Access the URL included in the "Temporary registration notification mail". The final registration window will be displayed. Your user account is sent to the email address you registered ("User Registration Complete Email"). User registration is complete and you can now login to the G-Portal.

3. How to login to the G-Portal web site

In order to download or process products using the G-Portal website, you should login to the G-Portal website with the account that you registered on the web in advance.

If you enter the wrong password five times in a row, your account will be locked. The account will be automatically unlocked after 10 minutes.



- (1) Click "login" at menu on a left pane of the top window. Appear the login window.



- (2) Input your user account and password in login window. Click "login" button.



- (3) After login successfully, the "login" button at menu on left pane of the top window switches "logout: [account name]" button.

4. How to download products via G-Portal SFTP site

To download products via the G-Portal SFTP site, you should login to the SFTP site with a user account that you registered on the Web in advance.

You can connect to the SFTP site using software such as WinSCP, or by command line from Linux/UNIX (including Mac OS).

4.1. Basic information

This is the information required to connect to the G-Portal SFTP site.

Note that connections using public key cryptography authentication are limited to certain specific users. Registered users should use account/password authentication.

host	ftp.gportal.jaxa.jp
port	2051
protocol	SFTP
user name	User account registered in G-Portal
password	Password registered in G-Portal (Used for account authentication)
Private key * Specific user only	A private key corresponding to the public key registered in G-Portal (Used in case of public key cryptographic authentication)

4.2. How to download products from SFTP site using command line

This section describes how to download products via SFTP using the command line on Linux/UNIX (including Mac OS).

4.2.1. How to connect to G-Portal **with account authentication**

If you are a "registered user," please use this method. (Authentication using the public key cryptography method described in Section 4.2.2 cannot be used.)

If you enter the wrong password five times in a row, your account will be locked. The account will be automatically unlocked after 24 hours.

You can connect to the G-Portal SFTP site using your account credentials by entering the following command in the command line:

```
$ sftp -oPort=2051 [account name]@ftp.gportal.jaxa.jp
```

If you are successfully connected to the SFTP server, "Password:" will be displayed in command

line, so enter your password.

If you are logged in successfully:

```
sftp >
```

is displayed.

◆ List view

Enter:

```
sftp > ls
```

to display a list of files and directories.

◆ Change directory

Enter:

```
sftp > cd [directory name]
```

to move to a specific directory.

*Note: Depending on your account permissions, you may not be able to move to directories that are displayed in the list.

◆ Download a file

Enter:

```
sftp > get [file name]
```

to get a file. The specified file will be downloaded and saved in a directory on your computer.

◆ Exit SFTP

Enter:

```
sftp > bye
```

to disconnect SFTP server.

4.2.2. How to connect to G-Portal with public key cryptography authentication

If your user category is "Specific User", you can also use this method. For information on how to register a public key, see Section 4.2.3 or 4.2.4.

You can access SFTP using public key cryptography authentication by entering the following command on the command line.

```
$ sftp -oPort=2051 -oIdentityFile=[public key path] [account name]@ftp.gportal.jaxa.jp
```

If you are logged in successfully:

```
sftp >
```

is displayed.

◆ List view

Enter:

```
sftp > ls
```

to display a list of files and directories.

◆ Change directly

Enter:

```
sftp > cd [directory name]
```

to move to a specific directory.

*Note: Depending on your account permissions, you may not be able to move to directories that are displayed in the list.

◆ Download a file

Enter:

```
sftp > get [file name]
```

to get a file. The specified file will be downloaded and saved in a directory on your computer.

◆ Exit SFTP

Enter:

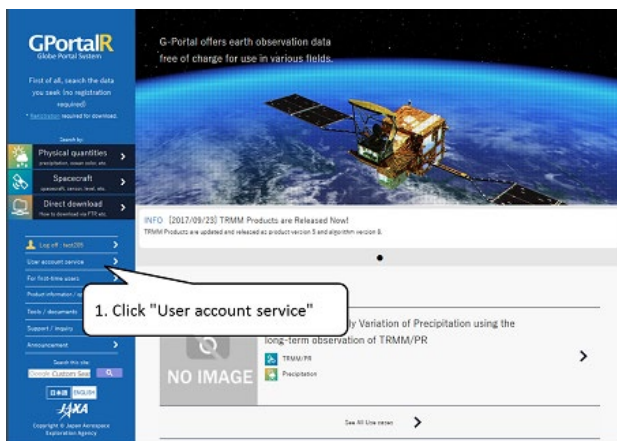
```
sftp > bye
```

to disconnect SFTP server.

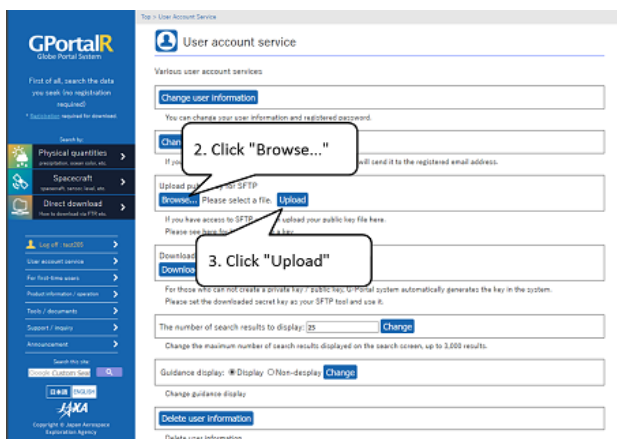
4.2.3. How to register a public key (for authentication using public key cryptography)

The following shows how to register the public key you created yourself to G-Portal. (Please note that you should not register the private key.)

You can also use G-Portal's functions to create private and public keys and automatically register that public key. For details, see Section 4.2.4 "Generating private and public keys and automatically registering the public key using G-Portal's function."



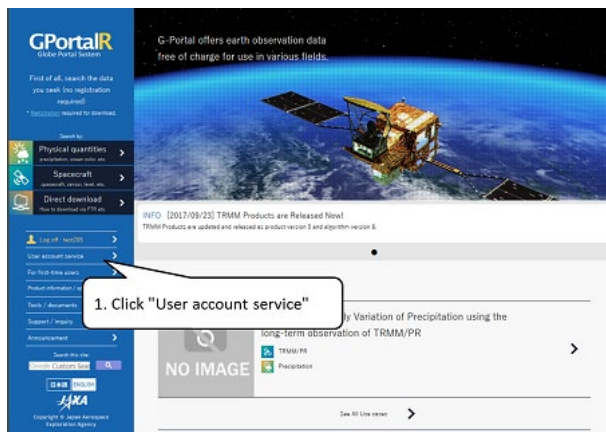
- (1) After logging in to the system, click "Account service" on the menu to display the user account service screen.



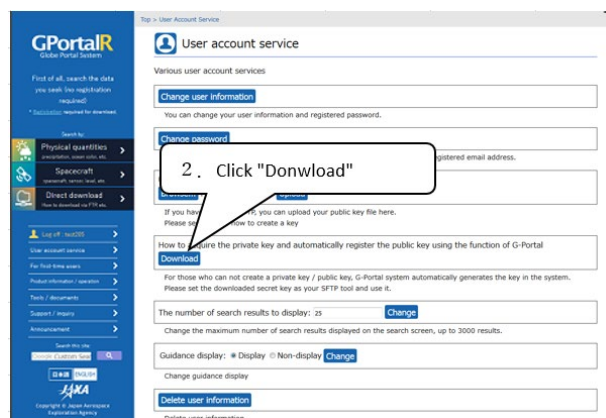
- (2) Specify the public key file from the "Browse" button. If the public key has already been registered, it will be updated to the specified public key.
- (3) With the "Upload" button, the specified public key is registered in this system.
*** If the public key menu is not displayed, your user category is "registered user" and you cannot use public key cryptography for authentication.**

4.2.4. Generating private and public keys and automatically registering the public key using G-Portal's function (for authentication using public key cryptography)

This section introduces how to create a private key and a public key using the functions of G-Portal. With this method, the public key is registered automatically, so you do not need to register it yourself.



- (1) After logging in to the system, click "Account service" on the menu to display the user account service screen.



- (2) Click the "Download" button to generate the private key and download the private key to your computer. Also, generate a corresponding public key and register it on the G-Portal.
*** If the public key menu is not displayed, your user category is "registered user" and you cannot use public key cryptography for authentication.**

4.3. How to download products from an SFTP site using WinSCP (For Windows)

This section shows how to download the product from the SFTP site using WinSCP on a Windows PC.

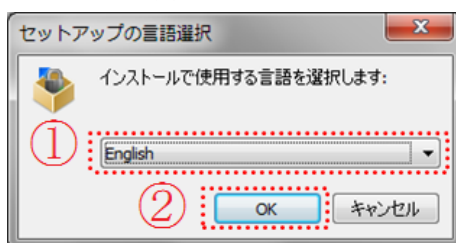
◆ Installation WinSCP

(1) Download WinSCP Installer from the following site.

WinSCP download site: <https://winscp.net/eng/download.php>

(2) Start WinSCP Installer.

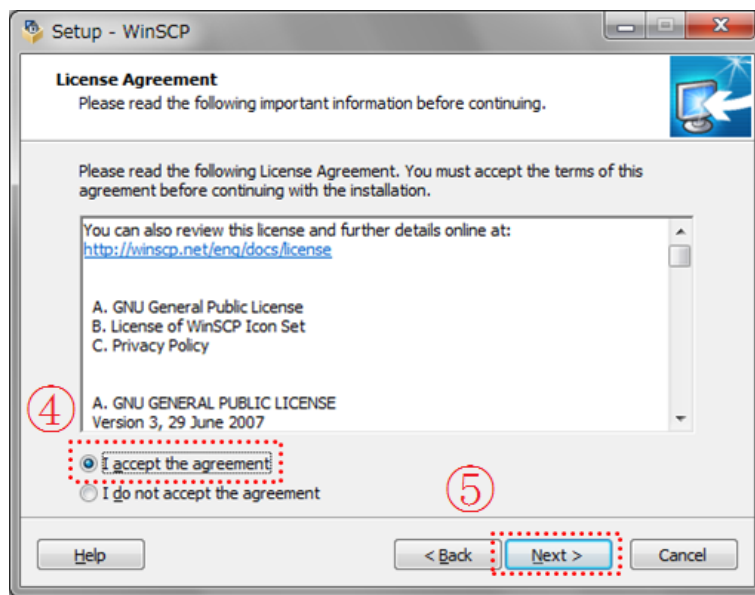
(3) Select "English" (1), and click [OK] (2).



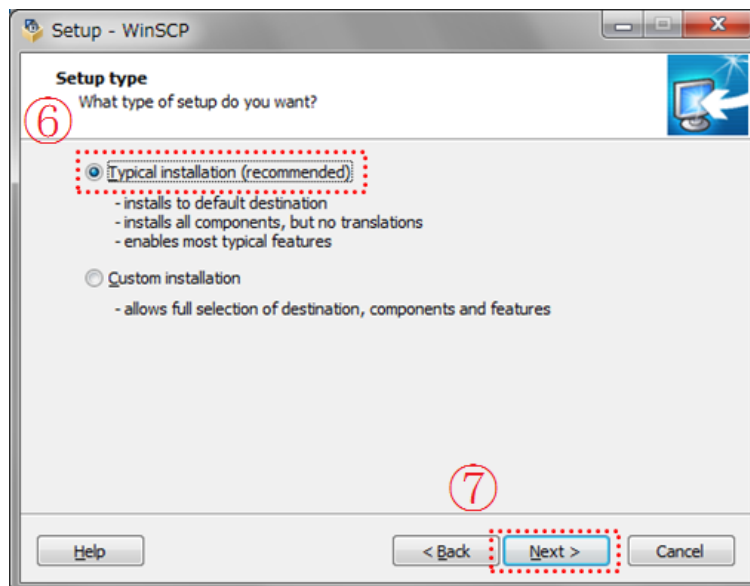
(4) Click [Next] (3).



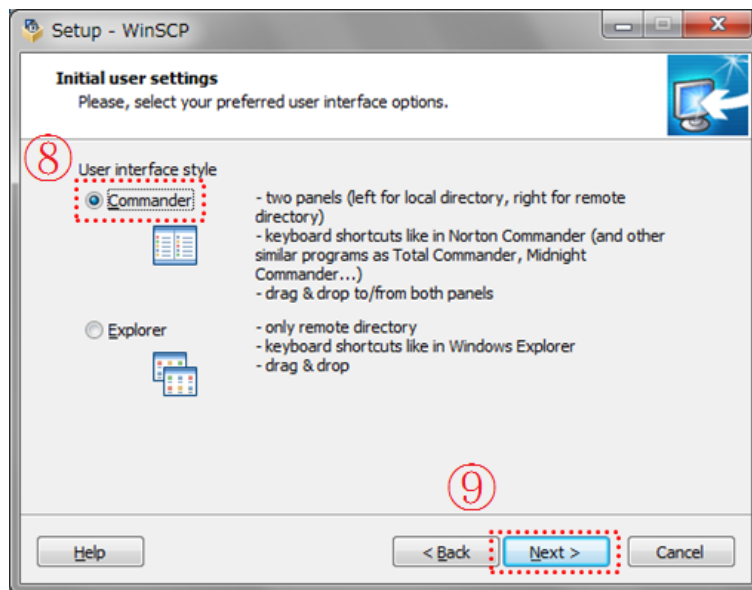
(5) Select "I accept the agreement" (4), and click [Next] (5).



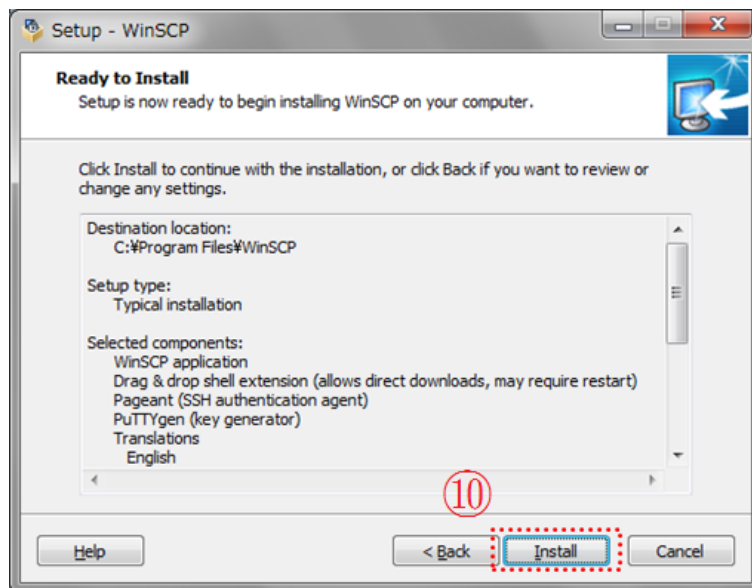
(6) Select "Typical installation (recommended)" (6), and click [Next] (7).



(7) Select "Commander" (8), and click [Next] (9).



(8) Click [Install] (10).

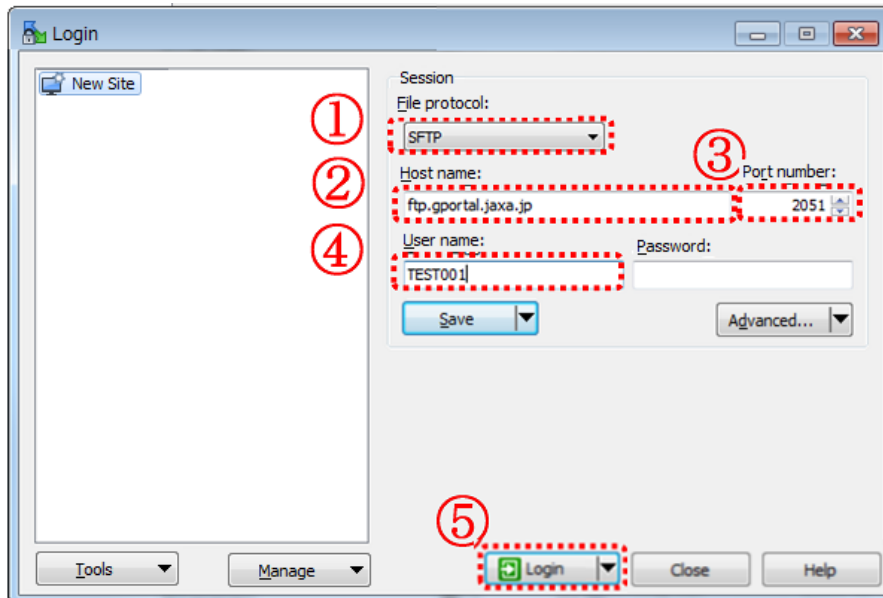


(9) WinSCP is installed successfully, you will see the following window. Click [Finish] (11).

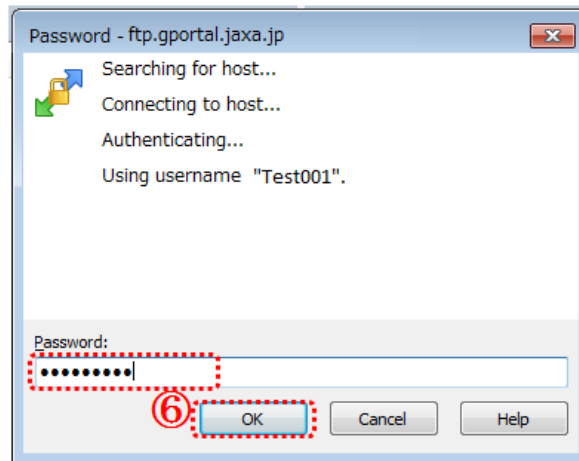


◆ **Connect SFTP (Account authentication)**

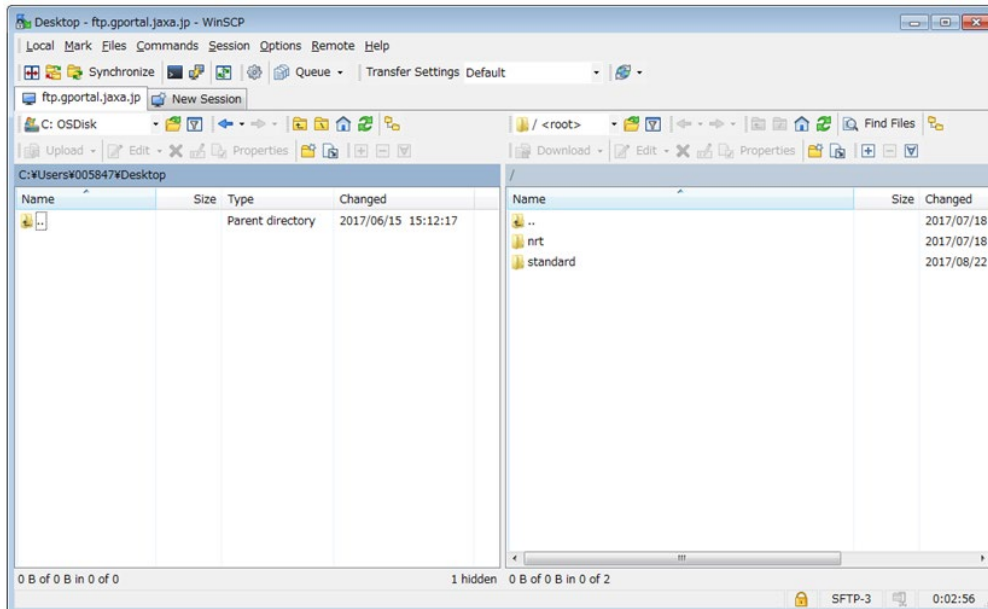
- (1) Start WinSCP.
- (2) Select "SFTP" for the File protocol. (1)
- (3) Enter "ftp.gportal.jaxa.jp" as the host name. (2)
- (4) Enter "2051" for port number. (3)
- (5) Enter the user account registered in G-Portal as "user name". (4)
- (6) Click [Login] to connect SFTP. (5)



(7) Enter the password registered in G-Portal and click [OK]. (6)

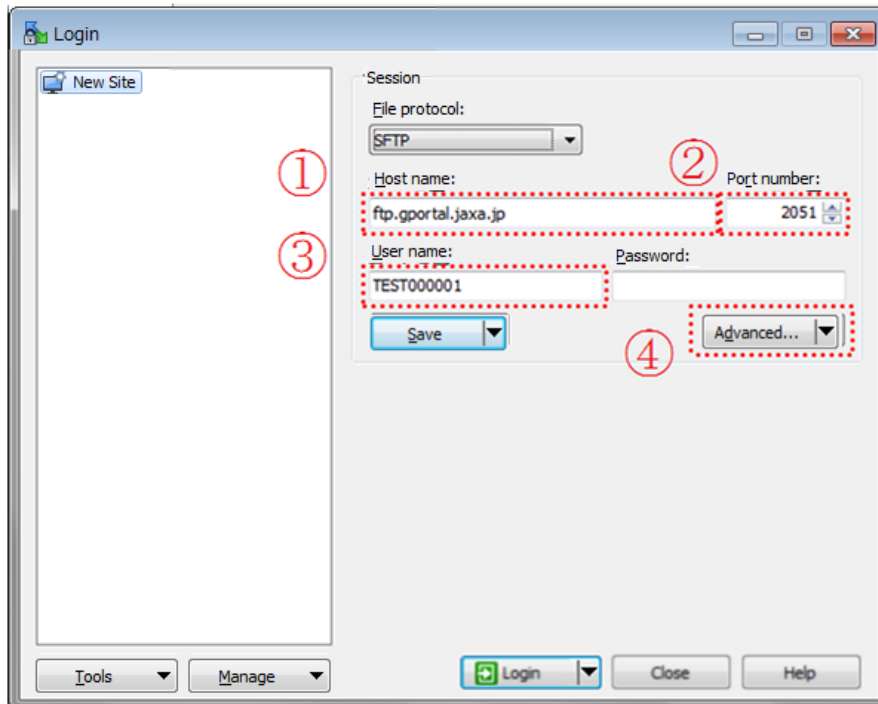


(8) If you have logged in successfully, the following image will be displayed.
The left pane is your computer and the right pane is the G-Portal directory.

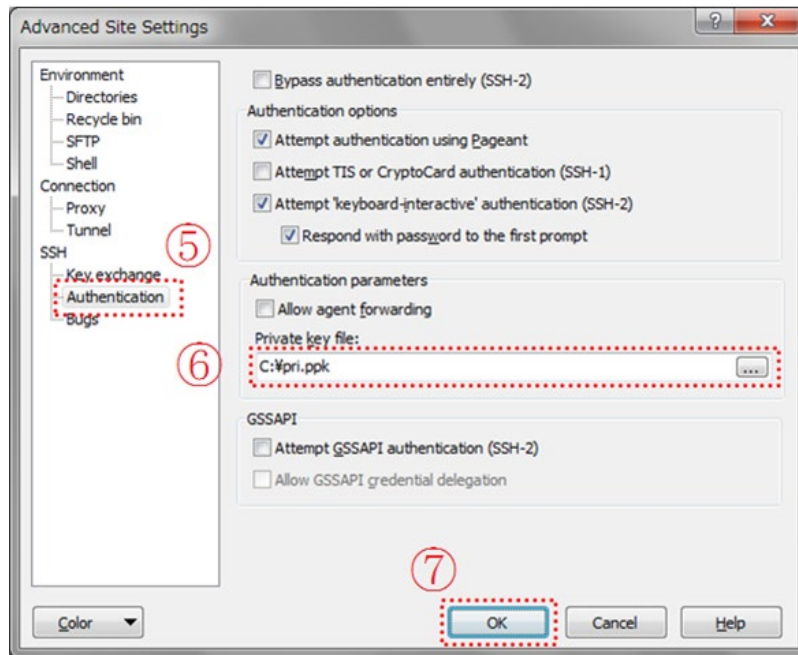


◆ **Connect SFTP (Public key cryptographic authentication * Specific user only)**

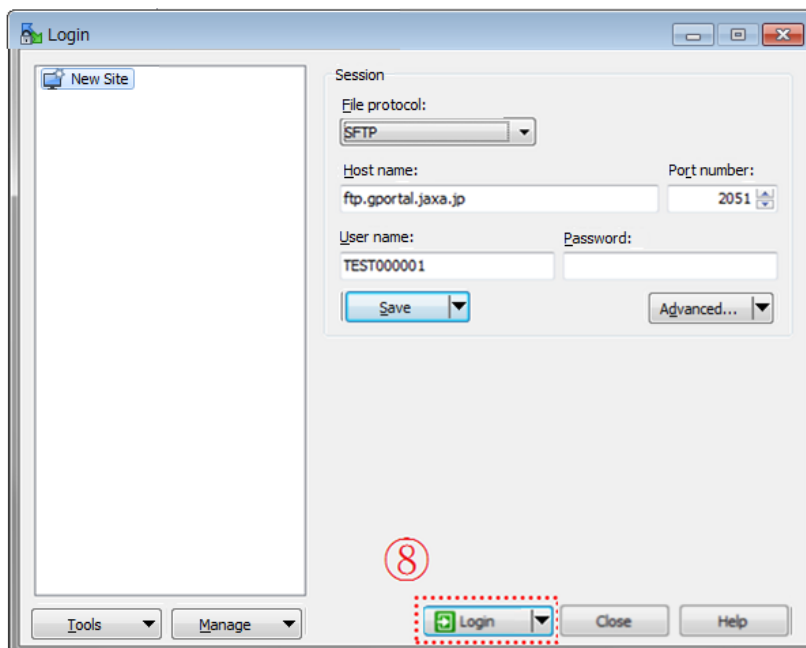
- (1) Start WinSCP.
- (2) Enter "ftp.gportal.jaxa.jp" into "Host name". (1)
- (3) Enter "2051" into "Port number". (2)
- (4) Enter the user account registered in G-Portal as "User name". (3)
- (5) Click [Advanced...] (4) to set private key file.



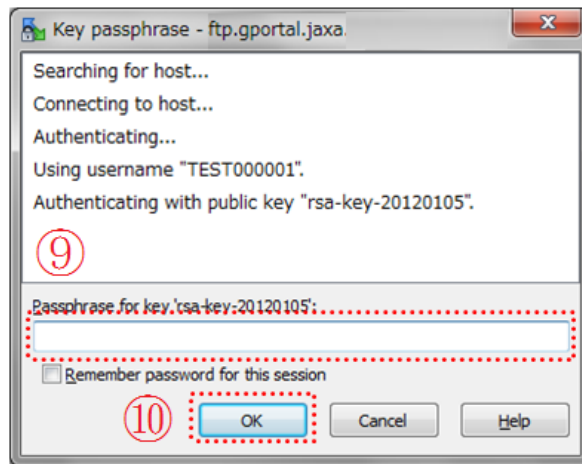
- (6) Select "Authentication". (5)
- (7) Select private key file that you created into "Private key file". (6)
- (8) Click [OK]. (7)



- (9) Click [Login] (8) to SFTP login.



(10) If you have set a password to decrypt the private key, click [OK] (10) button to enter the password (9) that you set.



(11) If you have logged in successfully, the following image will be displayed.
The left pane is your computer folder, the right is the G-Portal directory.

